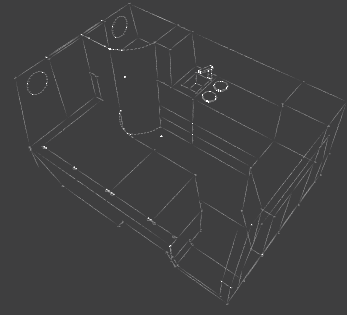


malteplorer Toyota

Land Cruiser Series 200, pathenger



The malteplorer Pathenger is based on Toyota's Land Cruiser LC 200 model. It is a true expedition vehicle, capable of long distance travel through the toughest terrain but it still has all the luxury and comfort you expect from a Land Cruiser SUV.

Our malteplorer Toyota Land Cruiser Pathenger comes fully equipped and ready for your first adventure. We have modified and upgraded the

chassis, drivetrain and suspension and included all necessary recovery gear. The carbon fiber cabin is completely customized and includes two sleeping compartments, a full kitchenette equipped with a sink, refrigerator, two burner propane cooktop, warm water system and plenty of storage. This model even comes with all the dishes and cutlery you need to prepare your first meal on the road.

Vehicle

- Model: Toyota LC200 V8
- Year: 2007
- Engine: 5.7L V8

Suspension:

- IFS/rigid axles
- Maltec performance suspension system
- Progressive coil springs
- Wheelbase: 2850mm
- Length: 16.75 ft
- Width: 6.56 ft
- Height: 7.54 ft
- Weight: 5800 lbs
- Seats: 2
- Fuel capacity: 81gal (24 gal + 58 gal)

Expedition Cabin

- malteplorer carbon fiber pop-up roof
- Side entrance
- Side and rear windows
- Exterior storage boxes

Exterior

- Powder coated aluminum front bumper with under-body protection plate
- Warn 7500 lbs winch with Kevlar rope
- Custom made roof rack with spare wheel carrier
- Black powder coated Braid bead lock 7.5 x 17" rims
- BFGoodrich tires, 285/70 R17 M/T
- Side mounted sand board table
- maltec performance suspension system with remote reservoir shocks
- Eibach springs

Power Supply System

- 110 amp AGM battery system
- Split charge system with battery management
- 2000 watt 12-120 volt power converter
- 12 volt and 120 volt power plugs
- Hook up/landline charger
- Touchscreen power monitor

Interior

- Kitchenette: sink, refrigerator, two burner propane cooktop
- High gloss furniture with teak countertops
- Corian style floor
- Seating bench with flip bed
- Top loading storage compartments
- Alcantara bench cushions
- Closets
- Custom made upholstery and carpet throughout
- Simarine battery monitor system

Water System

- 14 gal water tank
- 12 volt pressure pump
- 4 gal water heater
- Outdoor shower

\$ 165,000

148.000 €

MALTEC

Maltec Germany | Holzener Str. 76 | 58708 Menden | Ph:+49 (0) 2373 3972808 | info@maltec.org
Maltec Trucks | P.O. Box: Telluride 4047 | Colorado | Ph:+1 (561) 657 9533 | info@maltec.org